

FISHER[®]FISHER MANUFACTURING COMPANY TOLL FREE: 800-421-6162 - FAX: 800-832-8238
customer@fisherfaucets.com - www.fisherfaucets.com

PRODUCT NAME:

CONTROL VALVE SWLH R/S CD

Customer/Wholesaler:

Date:

Job Name:

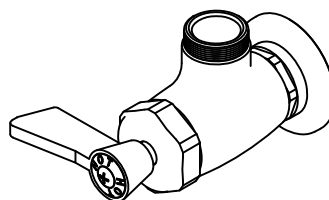
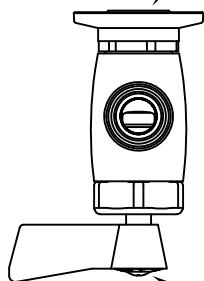
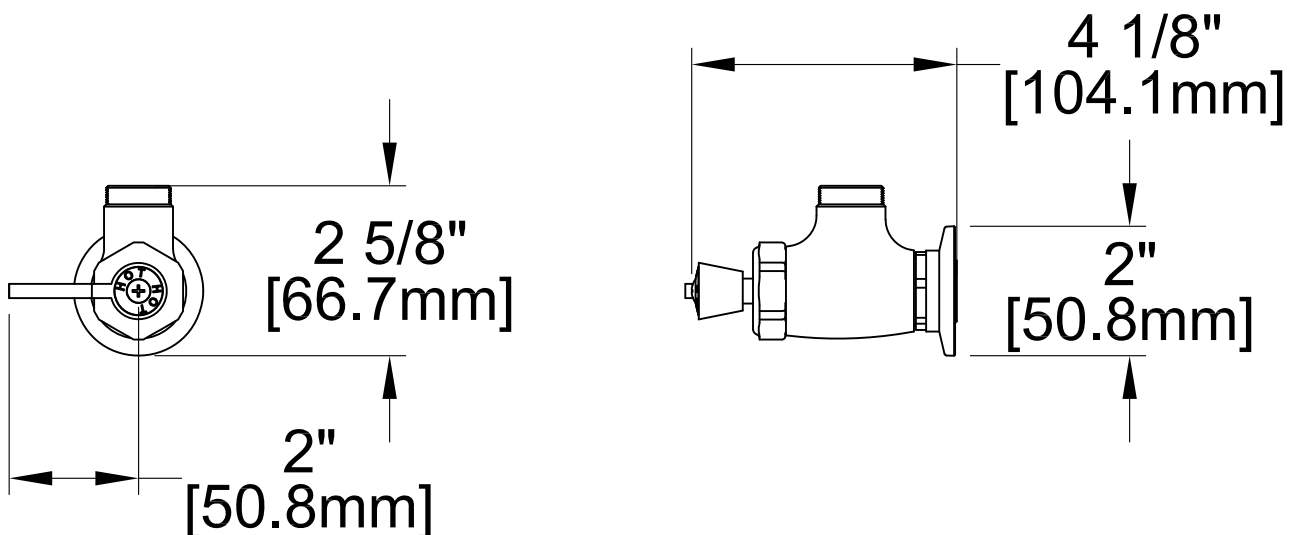
Model Specified: 37000

Quantity:

Contractor:

Architect/Engineer:

SPEC. CV/CB-SO-SWL

1/2" FEMALE NPT INLET**QUARTER TURN CERAMIC
DISC CARTRIDGES WITH
CHECK STEMS AND COLOR
CODED INDEXES****PRODUCT SPECIFICATIONS:**SINGLE WALL MOUNT MIXING FAUCET, QUARTER TURN
CERAMIC DISC CARTRIDGES WITH LEVER HANDLES, 1/2" FEMALE
NPT INLET**PRODUCT COMPLIANCE:**ASME A112.18.1 / CSA B125.1
NSF 61 - Section 9
NSF 372 (Low Lead Content)

Drawn: DF

Checked: EM

Approved: DF

Date: 11/18/23

Sheet:

1 of 2

FISHER[®]

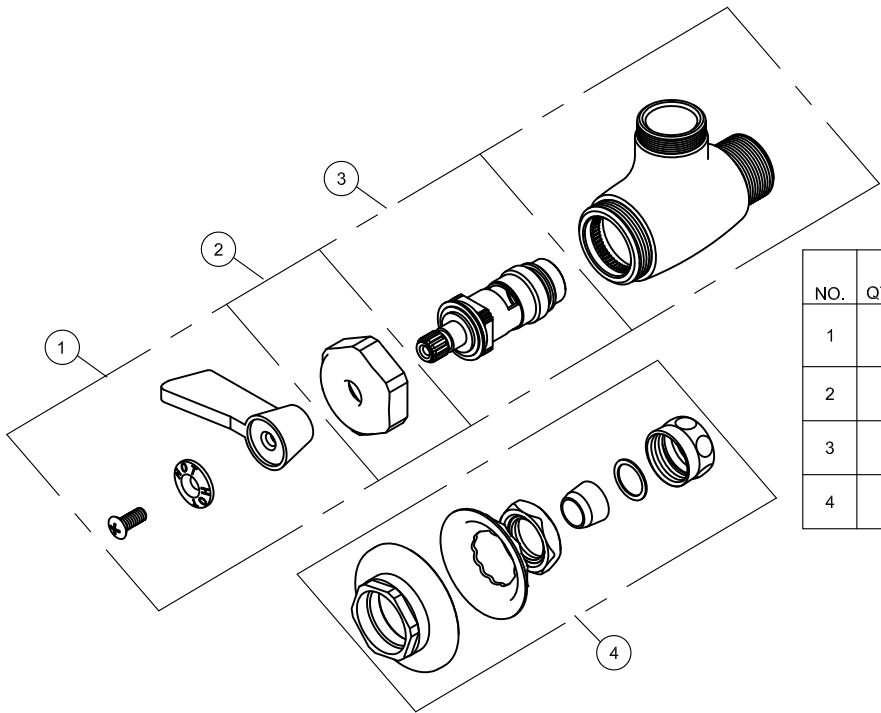
FISHER MANUFACTURING COMPANY TOLL FREE: 800-421-6162 - FAX: 800-832-8238
customer@fisherfaucets.com - www.fisherfaucets.com

PRODUCT NAME:

CONTROL VALVE SWLH R/S CD

SPEC. CV/CB-SO-SWL

Customer/Wholesaler:	Date:	Job Name:	Model Specified: 37000	Quantity:
Contractor:	Architect/Engineer:			



NO.	QTY.	ITEM	NAME
1	1	2000-0002	HANDLE KIT LEVER
2	1	75957	BIBB CAP FAUCET CD NL BRS CR
3	1	75959	STEM 1/2 CERAMIC DISK RH
4	1	73794	SLIP JOINT KIT 1/2

PRODUCT SPECIFICATIONS: SINGLE WALL MOUNT MIXING FAUCET, QUARTER TURN CERAMIC DISC CARTRIDGES WITH LEVER HANDLES, 1/2" FEMALE NPT INLET		PRODUCT COMPLIANCE: ASME A112.18.1 / CSA B125.1 NSF 61 - Section 9 NSF 372 (Low Lead Content)	
Drawn: DF	Checked: EM	Approved: DF	Date: 11/18/23 Sheet: 2 of 2