



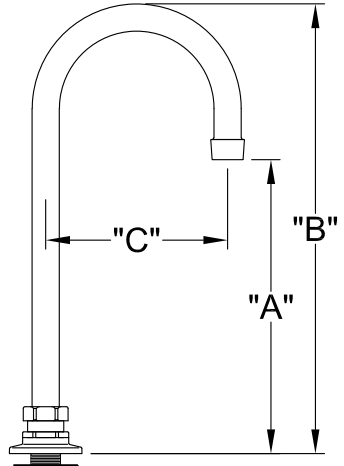
FISHER MANUFACTURING COMPANY TOLL FREE: 800-421-6162 - FAX: 800-832-8238
customer@fisher-mfg.com - www.fisher-mfg.com

PRODUCT NAME:

FAUCET SINGLE BASE DECK
& SWIVEL GOOSENECK SPOUT

SPEC. FAHB-BR-BD

Customer/Wholesaler:	Date:	Job Name:	Model Specified:	Quantity:
Contractor:		Architect/Engineer:		



1/2" SLIP JOINT

MODEL:

- 3815 FAUCET BD 12SGN
- 1929 FAUCET BD 06SGN

OPTIONS OR MODIFICATIONS:

- OTHER _____

FEATURES:

- * SINGLE BASE DECK
- * SWIVEL GOOSENECK SPOUT
- * 1/2" SLIP JOINT

SYSTEM LIMITS

- * TEMP: 40°F MIN. TO 160°F MAX.
- * PRESSURE 200 PSI MAX. STATIC
- * 2.20 GPM AT 60 PSI (8.3L/min @ 410 kPa)

SHIPPING WEIGHT

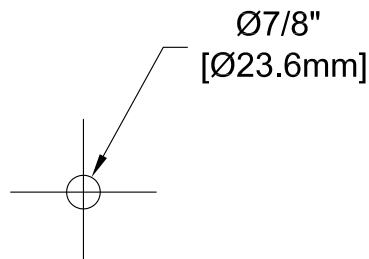
- * 2.0 LBS

PRODUCT COMPLIANCE:

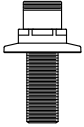
- * ASME A112.18.1 / CSA B125.1
- * NSF 61 - Section 9
- * NSF 372 (Low Lead Content)

MODEL	DIM "A"	DIM "B"	DIM "C"
3815	8-3/16" [208.0mm]	12-5/16" [312.7mm]	5-1/2" [139.7mm]
1929	4-7/16" [112.7mm]	8-1/16" [204.8mm]	3-1/2" [88.90mm]

ROUGH-IN:



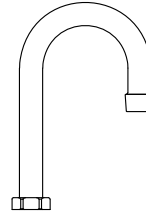
Replacement Parts for Single Base Deck Mount Faucets



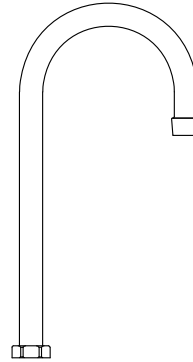
3800

BASE DECK

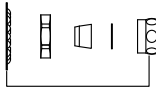
3968
6" SWIVEL
GOOSENECK SPOUT



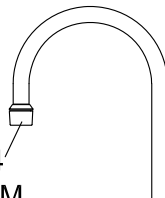
3965
12" SWIVEL
GOOSENECK SPOUT



73794
SLIP JOINT KIT



12564
2.2 GPM
AERATOR



73684
SPOUT NUT



20020
SNAP RING



1600-5000
SPOUT
O-RING



73521
LUBE



19119
SWIVEL SPOUT
RETRO-FIT KIT