

# FISHER<sup>®</sup>

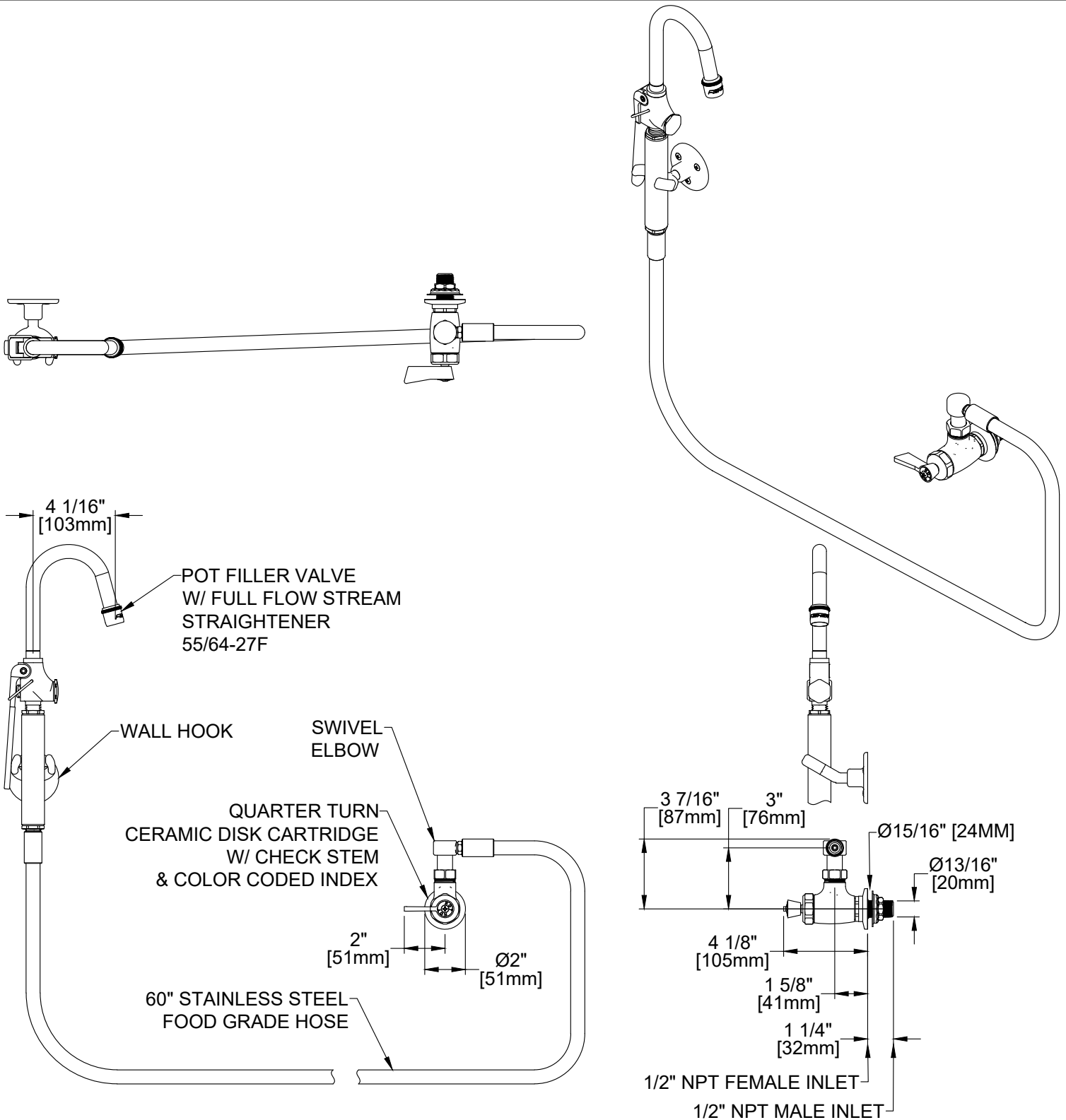
FISHER MANUFACTURING COMPANY TOLL FREE: 800-421-6162 - FAX: 800-832-8238  
customer@fisherfaucets.com - www.fisherfaucets.com

PRODUCT NAME:

POT FILLER SVE SWCDLH NP

SPEC. HPCB-SVE-SWL

Customer/Wholesaler:	Date:	Job Name:	Model Specified: 27500	Quantity:
Contractor:	Architect/Engineer:			



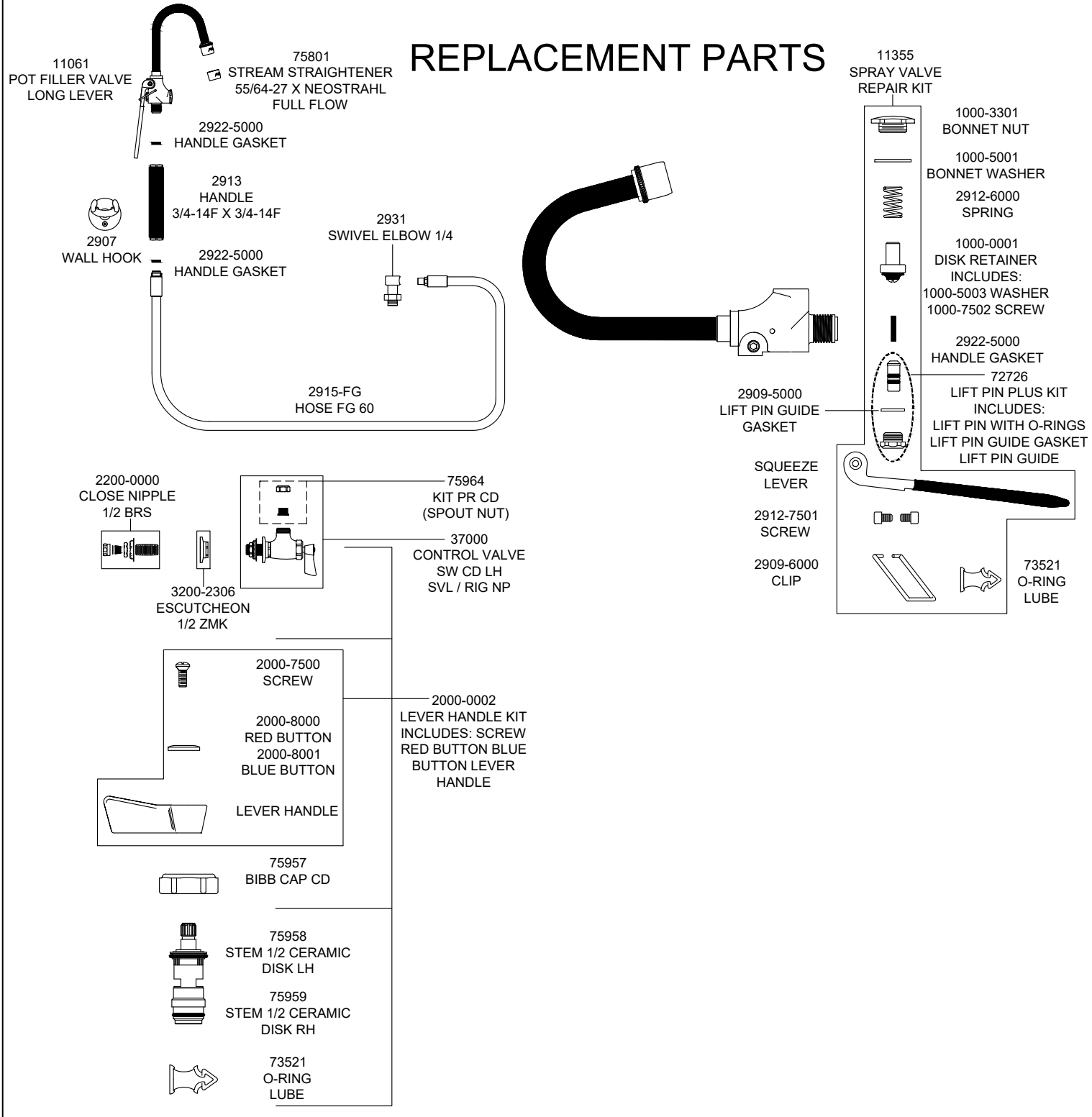
PRODUCT SPECIFICATIONS: SINGLE WALL / BACKSPLASH CONTROL VALVE, QUARTER TURN CERAMIC DISK CARTRIDGE W/ CHECK STEM, LEVER HANDLE, POT FILLER VALVE W/ FULL FLOW STREAM STRAIGHTENER 3.75 GPM @ 60 PSI, 60" STAINLESS STEEL FOOD GRADE HOSE, SWIVEL ELBOW, WALL HOOK, 1/2" NPT FEMALE INLET, 1/2" MALE NIPPLE INCLUDED

PRODUCT COMPLIANCE:  
ASME A112.18.1 / CSA B125.1  
NSF 61 - Section 9  
NSF 372 (Low Lead Content)

Drawn: LC	Checked: EM	Approved: LC	Date: 10/30/24	Sheet: 1 of 2
-----------	-------------	--------------	----------------	---------------

Customer/Wholesaler:	Date:	Job Name:	Model Specified: 27500	Quantity:
Contractor:		Architect/Engineer:		

## REPLACEMENT PARTS



PRODUCT SPECIFICATIONS: SINGLE WALL / BACKSPASH CONTROL VALVE, QUARTER TURN CERAMIC DISK CARTRIDGE W/ CHECK STEM, LEVER HANDLE, POT FILLER VALVE W/ FULL FLOW STREAM STRAIGHTENER 3.75 GPM @ 60 PSI, 60" STAINLESS STEEL FOOD GRADE HOSE, SWIVEL ELBOW, WALL HOOK, 1/2" NPT FEMALE INLET, 1/2" MALE NIPPLE INCLUDED

PRODUCT COMPLIANCE: ASME A112.18.1 / CSA B125.1 NSF 61 - Section 9 NSF 372 (Low Lead Content)